



Mpression Odyssey

Cygwin installation on Windows

Goal:

This document provides the steps to install Cygwin on a Windows machine. Cygwin can be used to program the Odyssey Mpression via the Cygwin script provided by Macnica (see references below).

The installation steps are similar on Windows 7, 8 and 10.

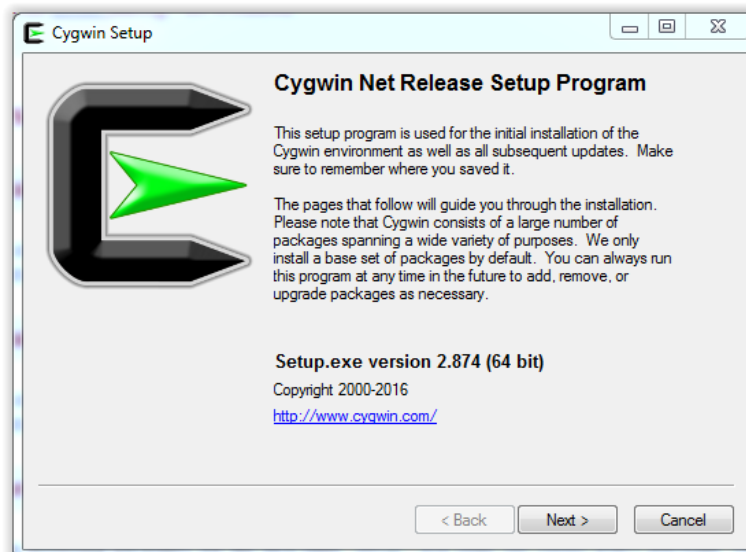
References:

The Odyssey Cygwin script is stored here below (under)

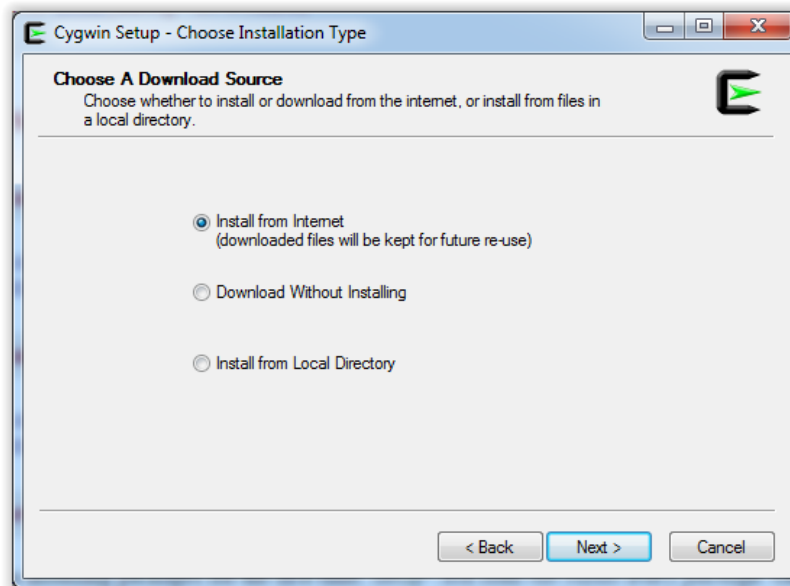
<http://www.m-pression.com/solutions/boards/odyssey/odyssey-downloads>

Installation Steps:

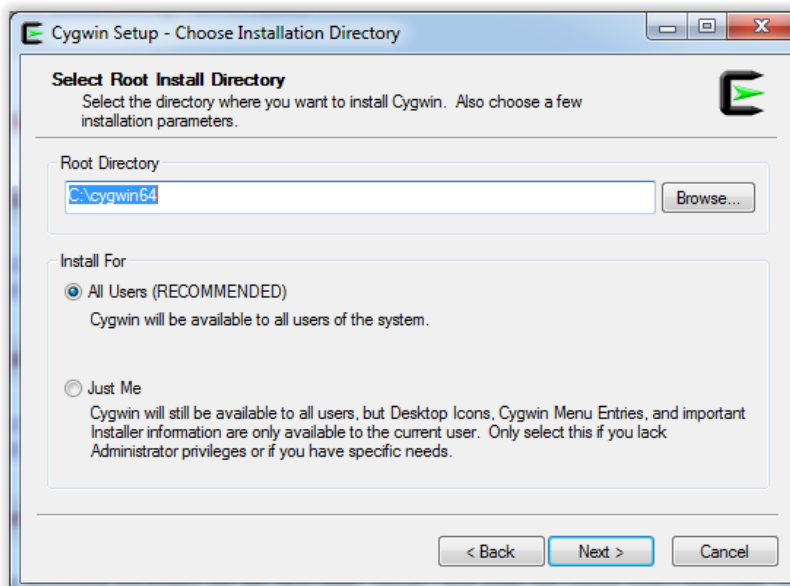
1. Download the executable file called setup-x86.exe or setup-x86_64.exe based on your machine architecture (32 vs 64-bit) from the website here: <https://cygwin.com/install.html>
2. Double click on the executable that you just downloaded. You should see the following Cygwin pop-up:



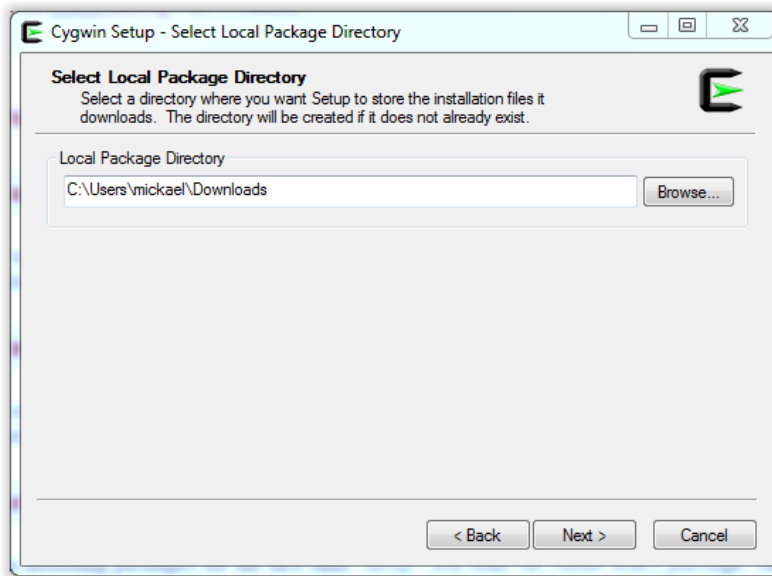
3. Select "Next"
4. Keep the "Install from Internet", select "Next"



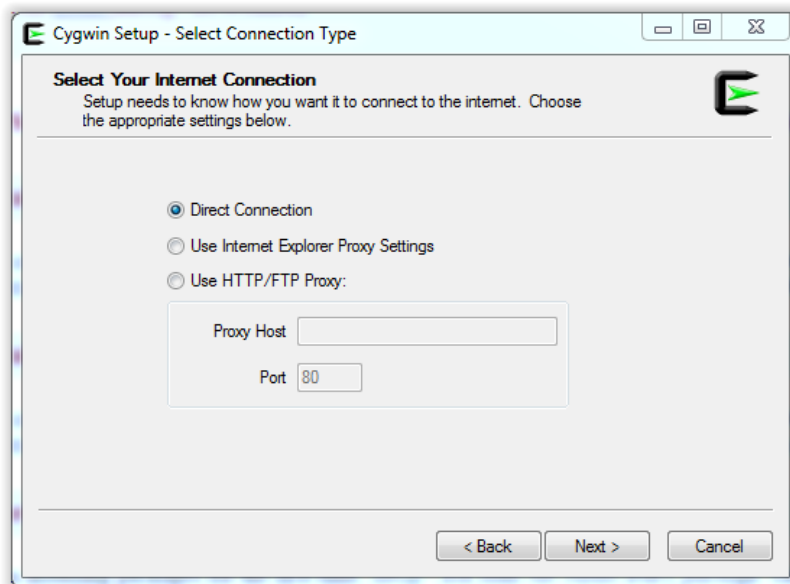
5. Choose a "Root Directory", we recommend to keep it under the default location. If you change it make sure you are not introducing white spaces (i.e My Documents)
6. Select Next to get to the next pop-up.



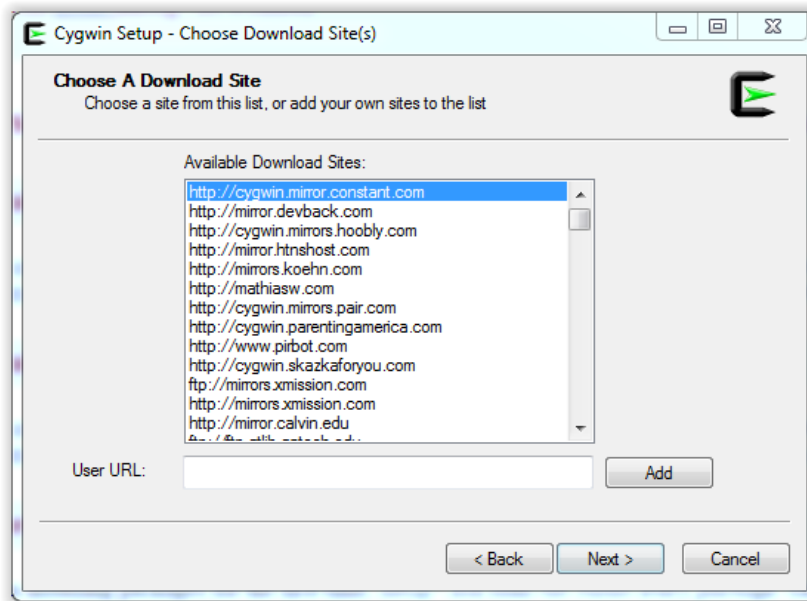
7. Choose the local package directory. Again, please make sure to not introduce a white space in the path.
8. Select "Next"



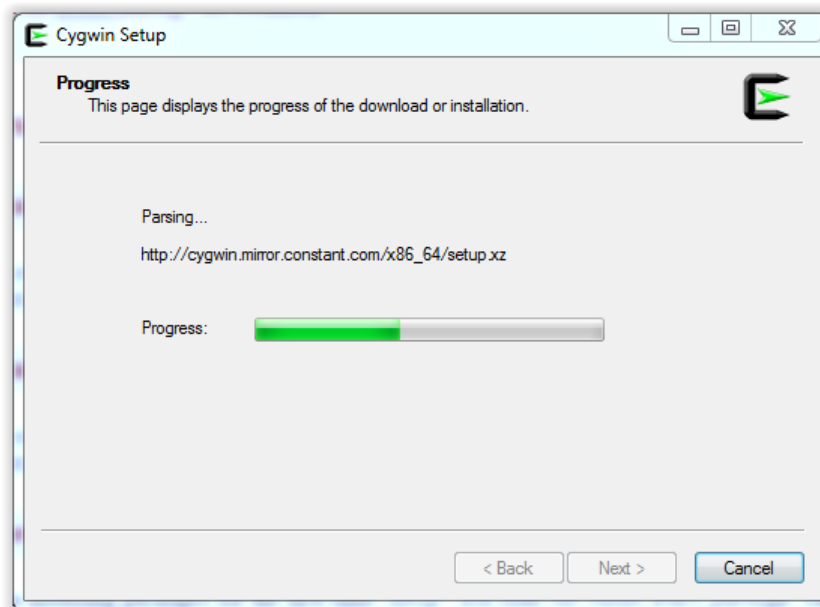
9. Use “Direct Connection” or add the proxy information based on your network configuration.
10. Select “Next”



11. Choose a mirror website to download Cygwin. You can try the first one available by default.
12. Select “Next”

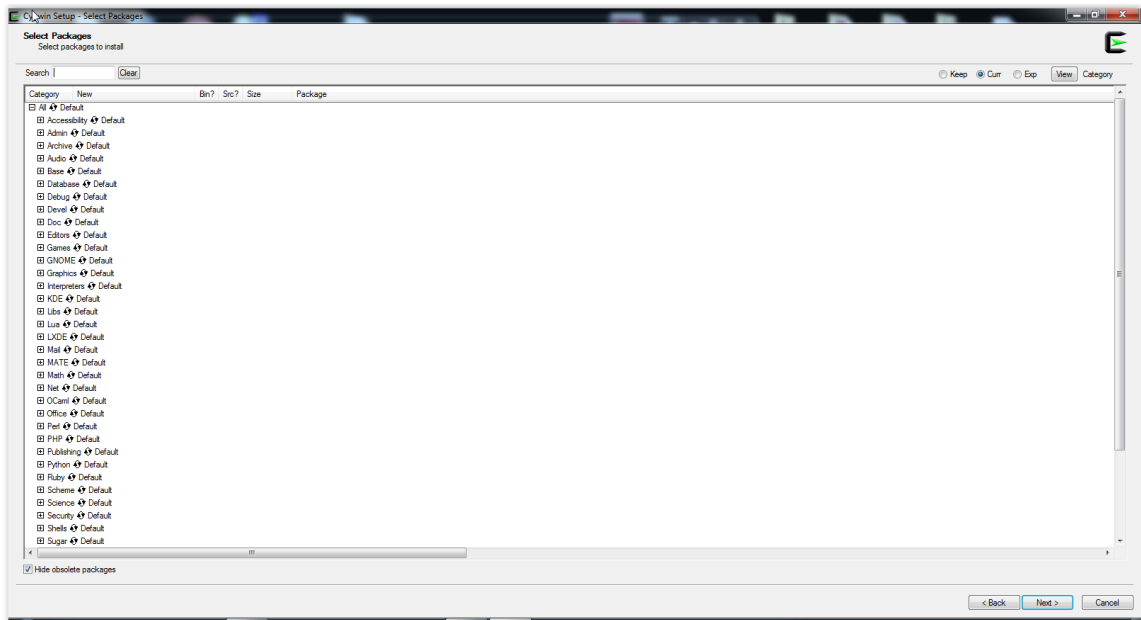


13. When the download starts, you should see the progress bar.



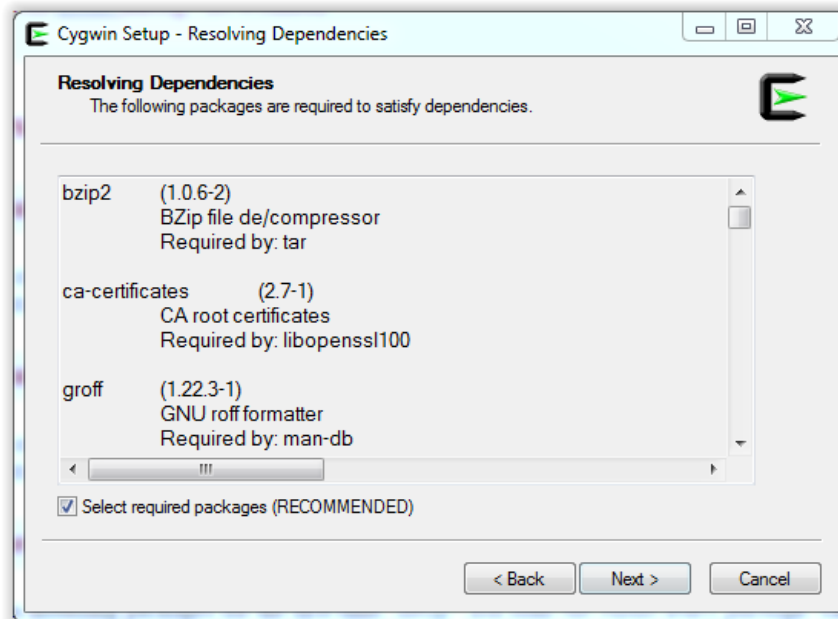
14. At the end of the download you should see the package window. During the next step Cygwin will install the default packages and that is all you need to run the Odyssey script.

15. Select "Next"



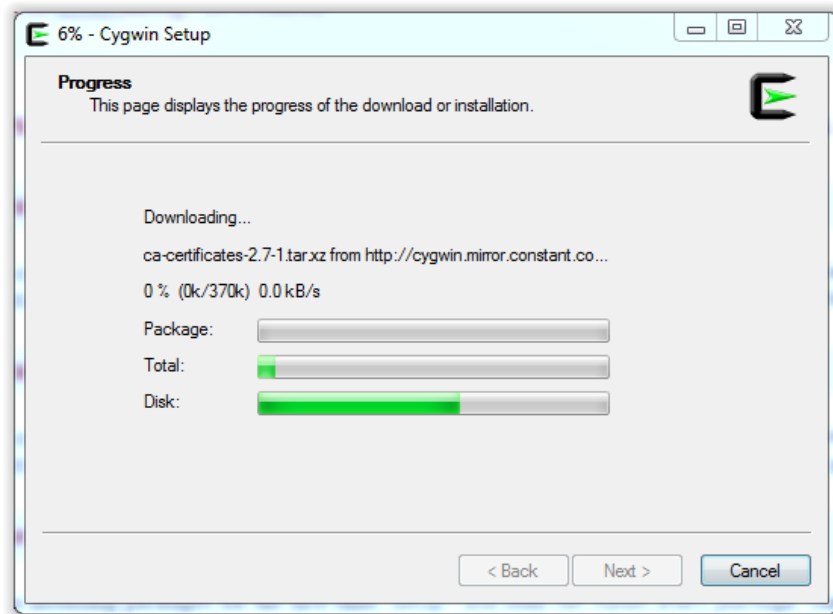
16. This pop up will show a summary of the default packages to be installed.

17. Select “Next”

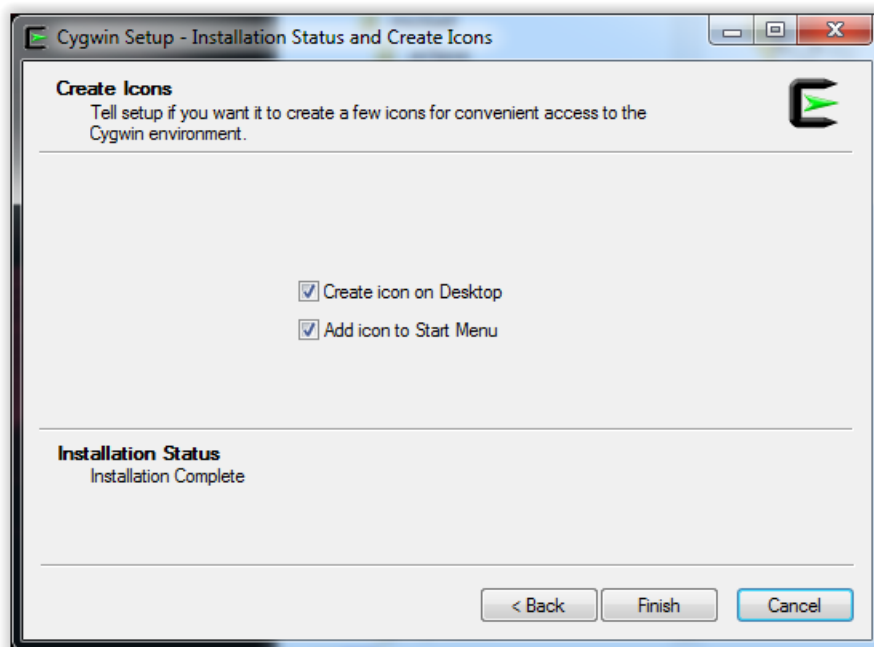


18. Default packages are being installed, follow the progress.

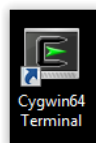
19. Press “Next” at the end of downloading/installation.



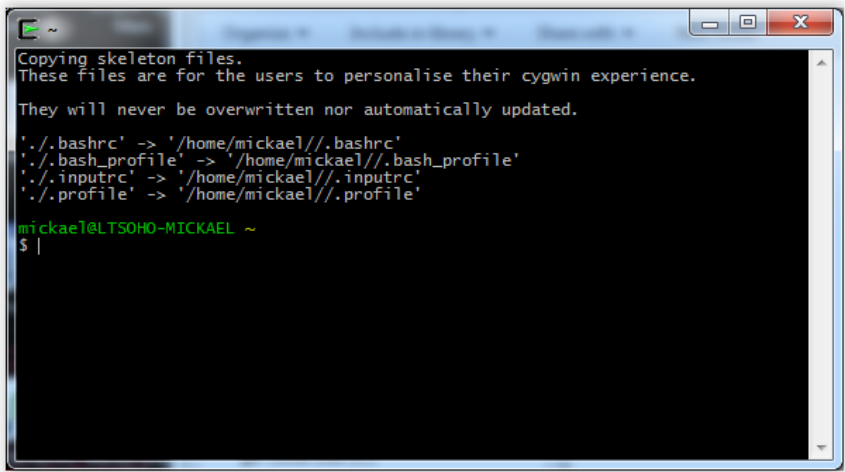
20. At the end of the installation it is recommended to create the icon on the Desktop.
21. Select "Finish"



22. The Cygwin icon on the Desktop should look like the one below.
23. Double click on it to launch the Cygwin console. The console is similar to a Windows Command Prompt but in this case it is a Unix based environment.

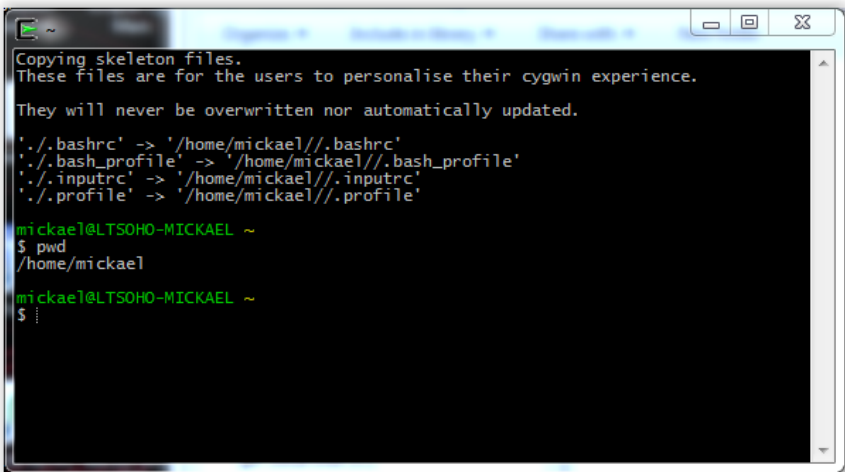


24. The first time you run the Cygwin console you should see Cygwin configuration files being copied on your computer (that is expected). This document does not go into the details of the Cygwin configuration. If you want to learn more, please visit the Cygwin website.



25. Now that you have the console up, try the UNIX “pwd” command. It should show you the path relative to the Cygwin environment: **/home/your_name/**

Your home directory is actually stored under: **C:\cygwinxx\home\your_name**



26. Store the Cygwin Mpression Odyssey script under: **C:\cygwinxx\home\your_name** before execution.

History:

Version	Date	Note	From
1.0	06/28/2016	Initial Version	MTI